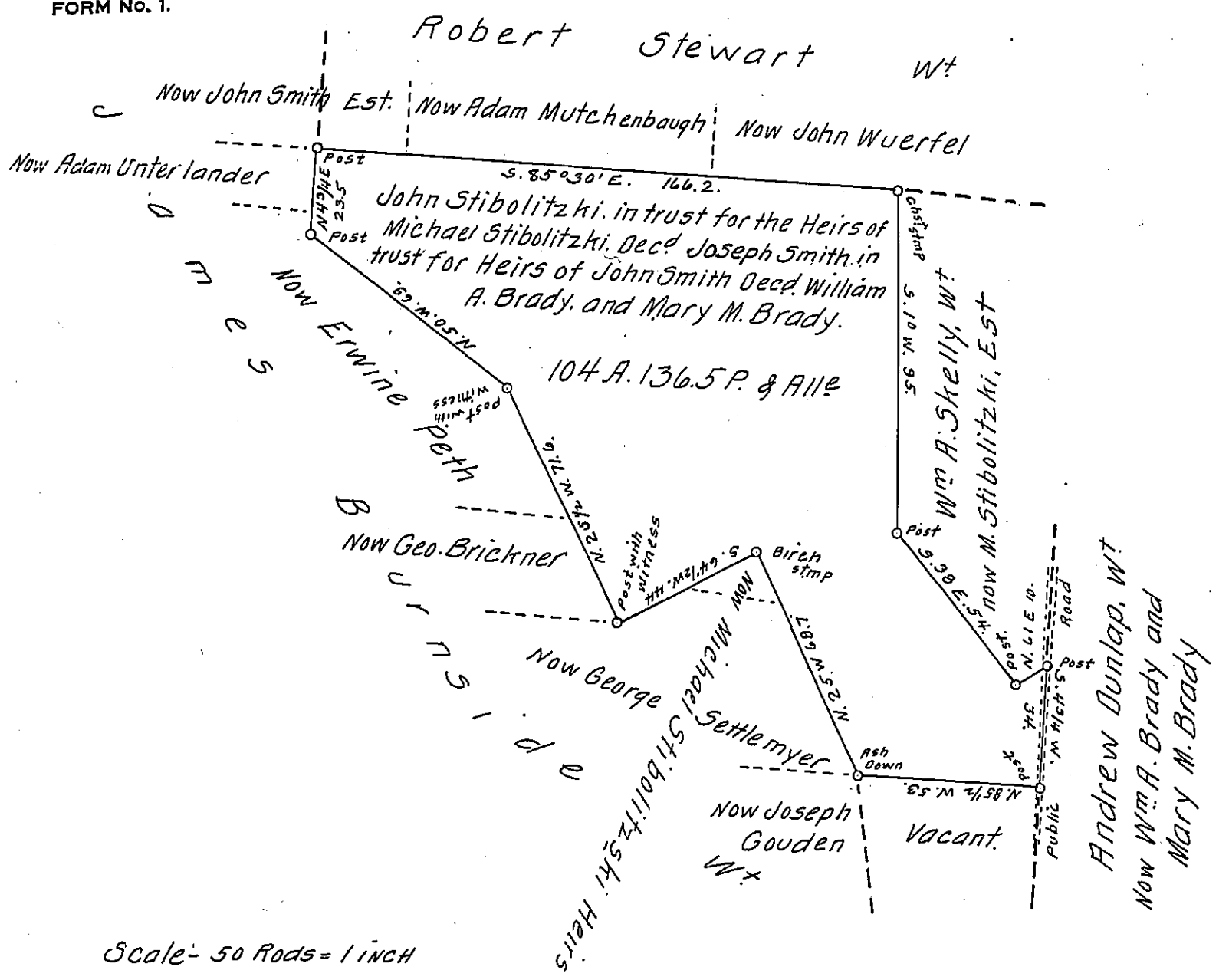


FORM No. 1.



Scale - 50 Rods = 1 INCH

A Draft of a tract of land situated in the Township of Summerhill and County of Cambria, containing One hundred and four acres, 136.5 perches and allowance of six per cent for roads, etc. Surveyed the fourth day of April 1898, in pursuance of a warrant granted to John Stibolitzki in trust for the heirs of Michael Stibolitzki dec'd Joseph Smith in trust for the heirs of John Smith dec'd William A. Brady and Mary M. Brady dated the twenty-second day of March 1898.

To James W. Latta, Esq., } S. G. Fetterman  
 Secretary of Internal Affairs. } County Surveyor.

IN TESTIMONY that the above is a copy of the original remaining on file in the Department of Internal Affairs of Pennsylvania, made conformably to an Act of Assembly approved the 16th day of February 1833, I have hereunto set my hand and caused the Seal of said Department to be affixed at Harrisburg, this seventh day of March 1907.

*Loaco Brown*  
 Secretary of Internal Affairs.